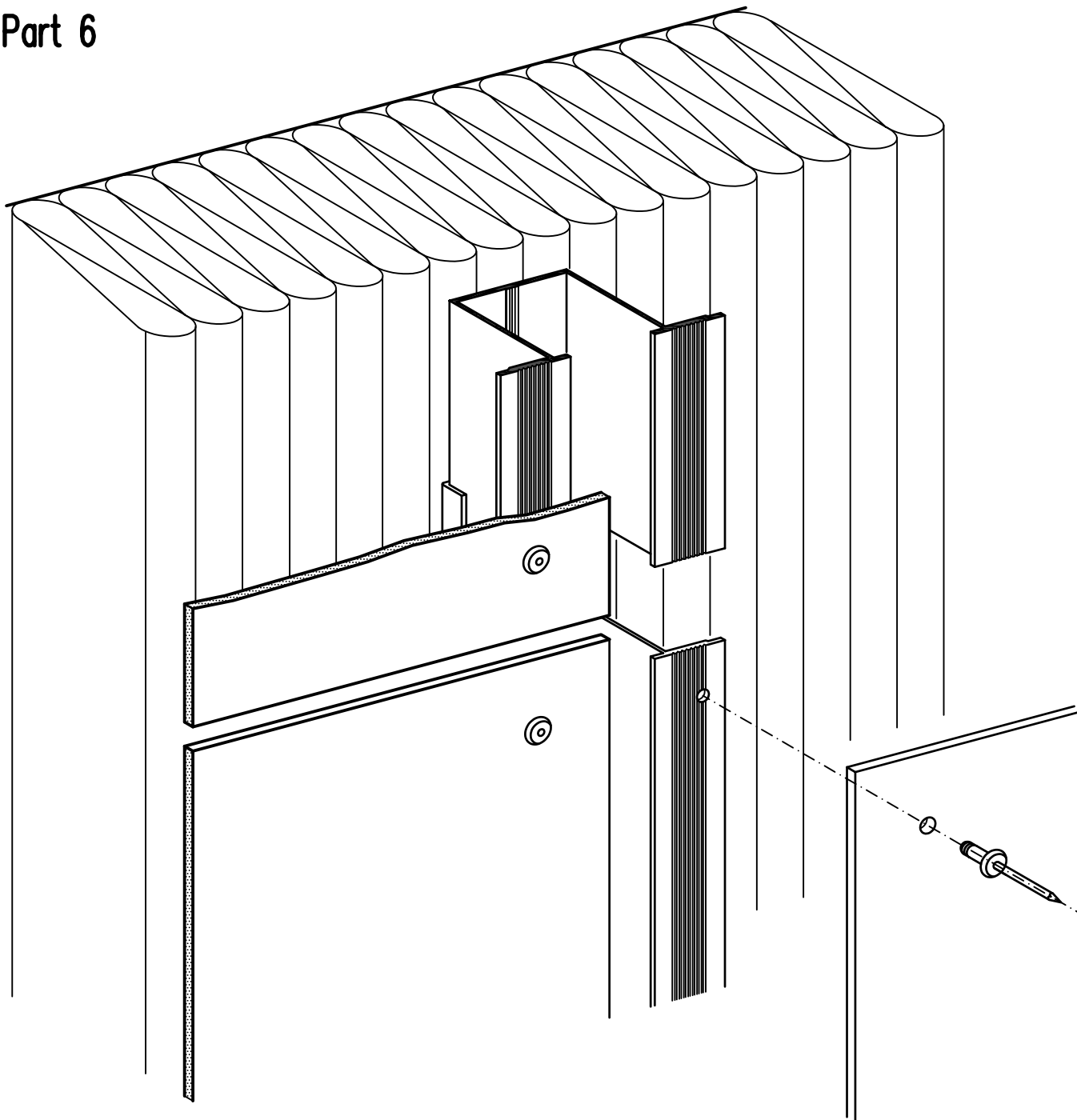


ALUCOBOND Design Manual

Fascia, riveted

Panel fixed to vertical Substructure

Part 6



- Description Page 1.1
- Extruded Sections and Accessories Page 2.1 – 2.2
- Examples Page 3.1 – 3.90

Fascia, riveted

Panel fixed to vertical Substructure

Description

A design using aluminium blind rivets is the most used economical method for fixing fascia cladding onto aluminium substructures.

This variation is suitable for ALUCOBOND fascia panels with vertical or horizontal panel layout.

Accurate cutting and attachment of the ALUCOBOND panels as well as precise positionings of the rivets are most essential.

Using rivet heads painted in the panel colour, a uniform appearance can be achieved.

Notes:

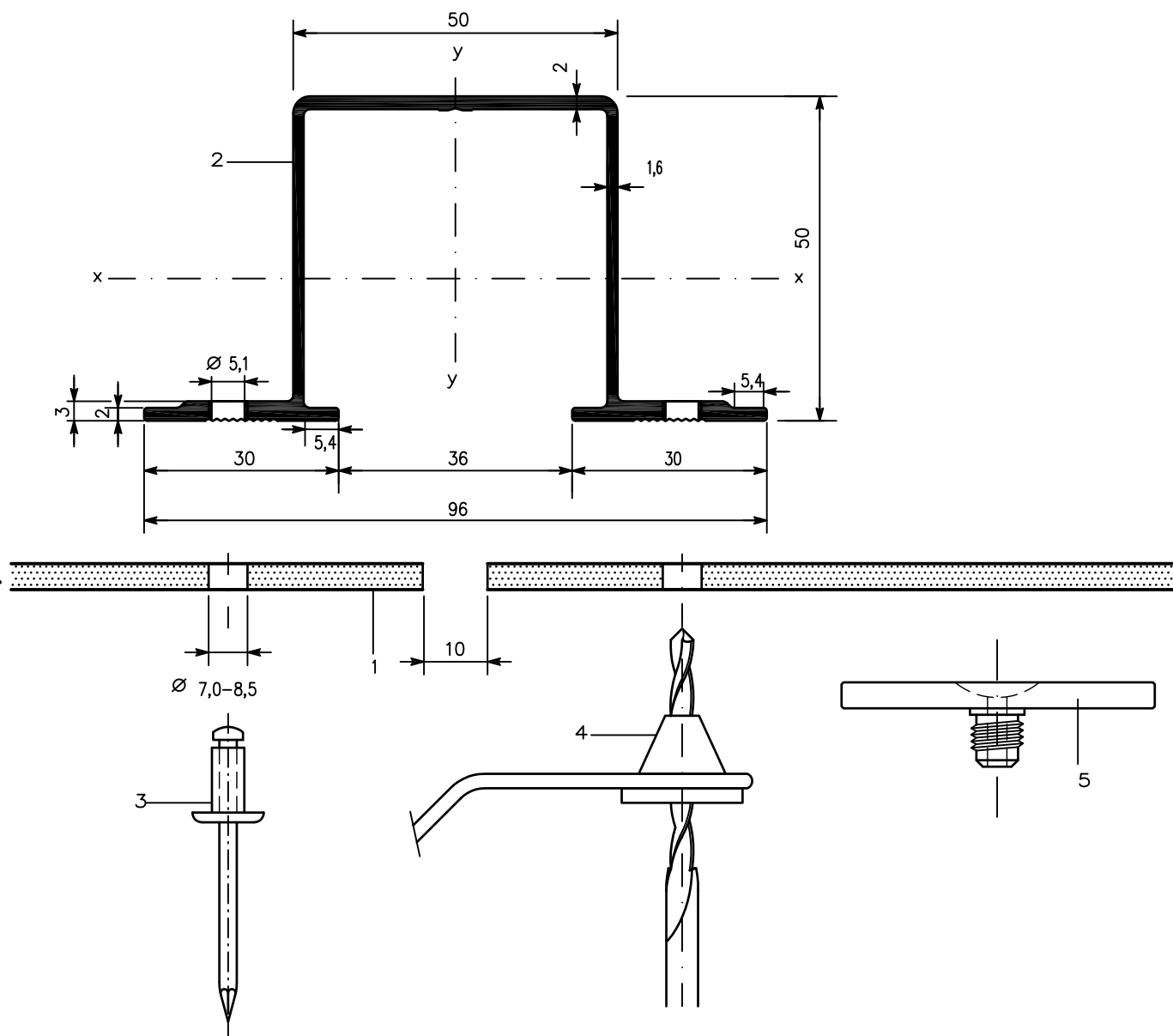
Use certified quality blind rivets with stainless steel mandrels only.

- shaft–diameter 5 mm
- head–diameter 11 or 14 mm
- Thickness to be riveted = total material thickness plus 2 mm
- to allow for restraint thermal expansion and contraction rivet holes in ALUCOBOND panels must be enlarged sufficiently.
- for stress–free riveting of fascia panels rivet attachment jig should be used. (clearance about 0,3 mm).
- spacings between rivets depend on expected actual windloads.

Fascia, riveted

Panel fixed to vertical Substructure

Extruded Sections and Accessories – For addresses of suppliers see section 3.4 "Processing"
 On the CD "Architecture in Detail" you'll find in the menu "Processing" a link to open the supplier addresses



1 ALUCOBOND

2 Extruded hat section 35 953

Weight 1,070 kg/m Periphery 405 mm

$I_x = 16,31 \text{ cm}^4$, $W_x = 5,81 \text{ cm}^3$, $I_y = 28,08 \text{ cm}^4$, $W_y = 5,85 \text{ cm}^3$

3* Aluminium-blind rivet; shaft dia. 5 mm; head-dia. 11 or 14 mm

Thickness to be riveted = total material thickness plus 2 mm

4* Drilling gage

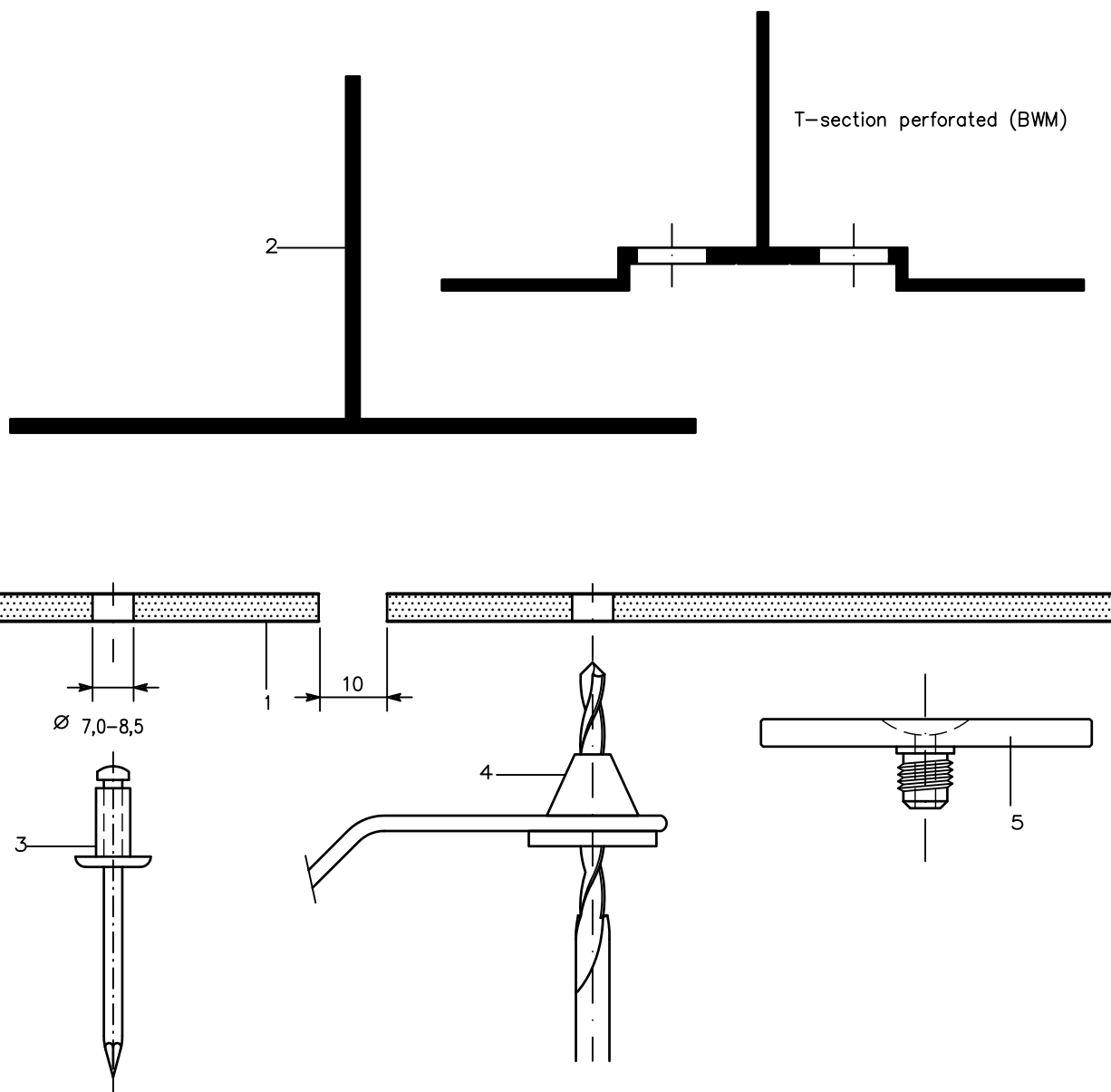
5* Rivet attachment jig for screwing on riveting gun (for stress-free riveting of ALUCOBOND panel)

* Available from competent dealer

Fascia, riveted

Panel fixed to vertical Substructure

Extruded Sections and Accessories – For addresses of suppliers see section 3.4 "Processing"
 On the CD "Architecture in Detail" you'll find in the the menu "Processing" a link to open the supplier addresses



1 ALUCOBOND

2 T-sections

3* Aluminium-blind rivet; shaft dia. 5 mm; head-dia. 11 or 14 mm
 Thickness to be riveted = total material thickness plus 2 mm

4* Drilling gage

5* Rivet attachment jig for screwing on riveting gun (for stress-free riveting of ALUCOBOND panel)

* Available from competent dealer

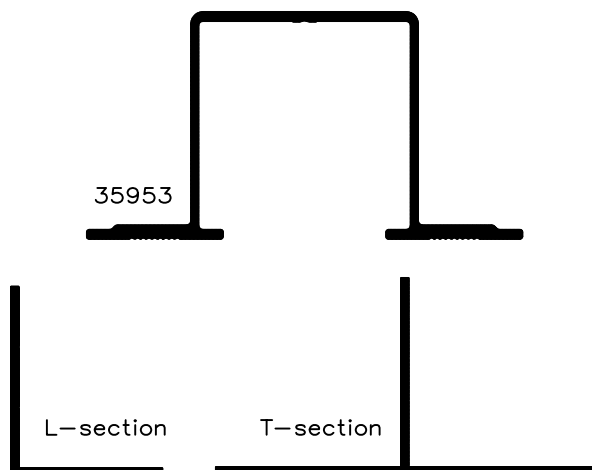
ALUCOBOND®

Fascia, riveted

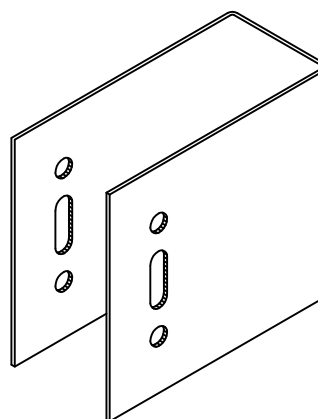
Panel fixed to vertical Substructure

Extruded Sections and Accessories – For addresses of suppliers see section 3.4 "Processing"
On the CD "Architecture in Detail" you'll find in the the menu "Processing" a link to open the supplier addresses

Vertical sections



Wall bracket/substructure

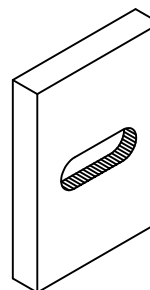


Alu-blind rivet

with stainless steel mandrel
(also available with painted head)
dia. 5 mm, head-dia. 11 or 14 mm

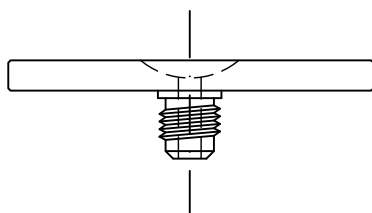


Plastic board for thermal separation of wall bracket

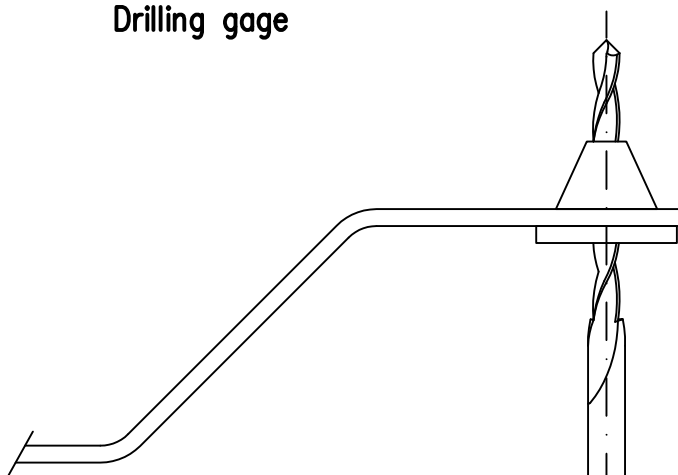


Rivet attachment jig

for stress-free riveting of ALUCOBOND panels



Drilling gage

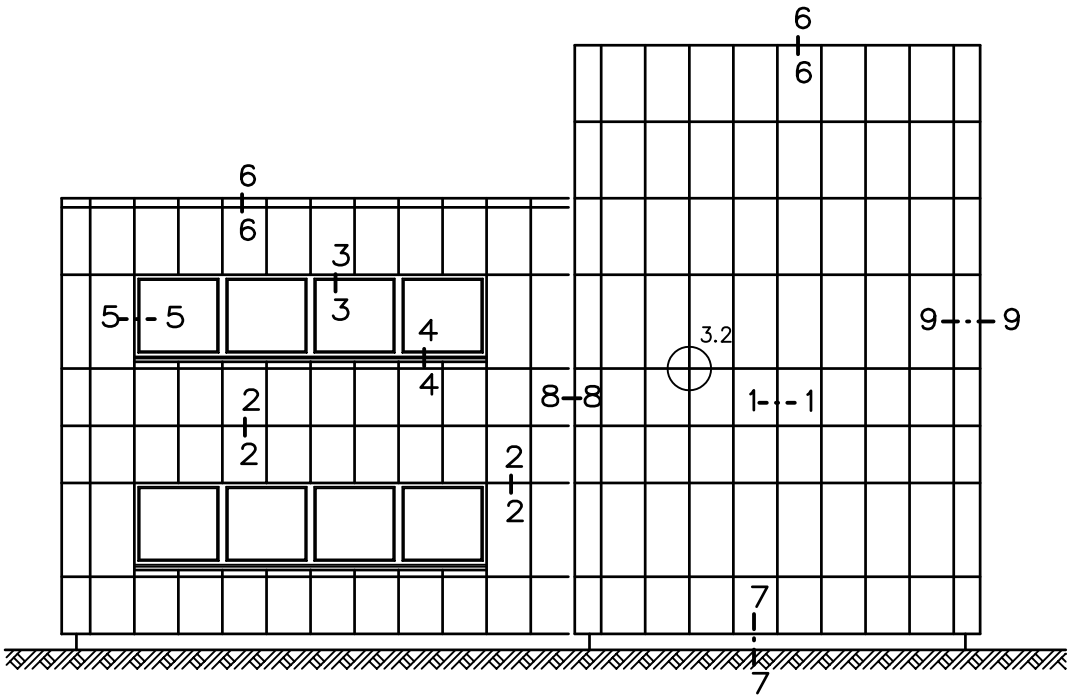


Fascia, riveted

Panel fixed to vertical Substructure

Survey

Key elevation

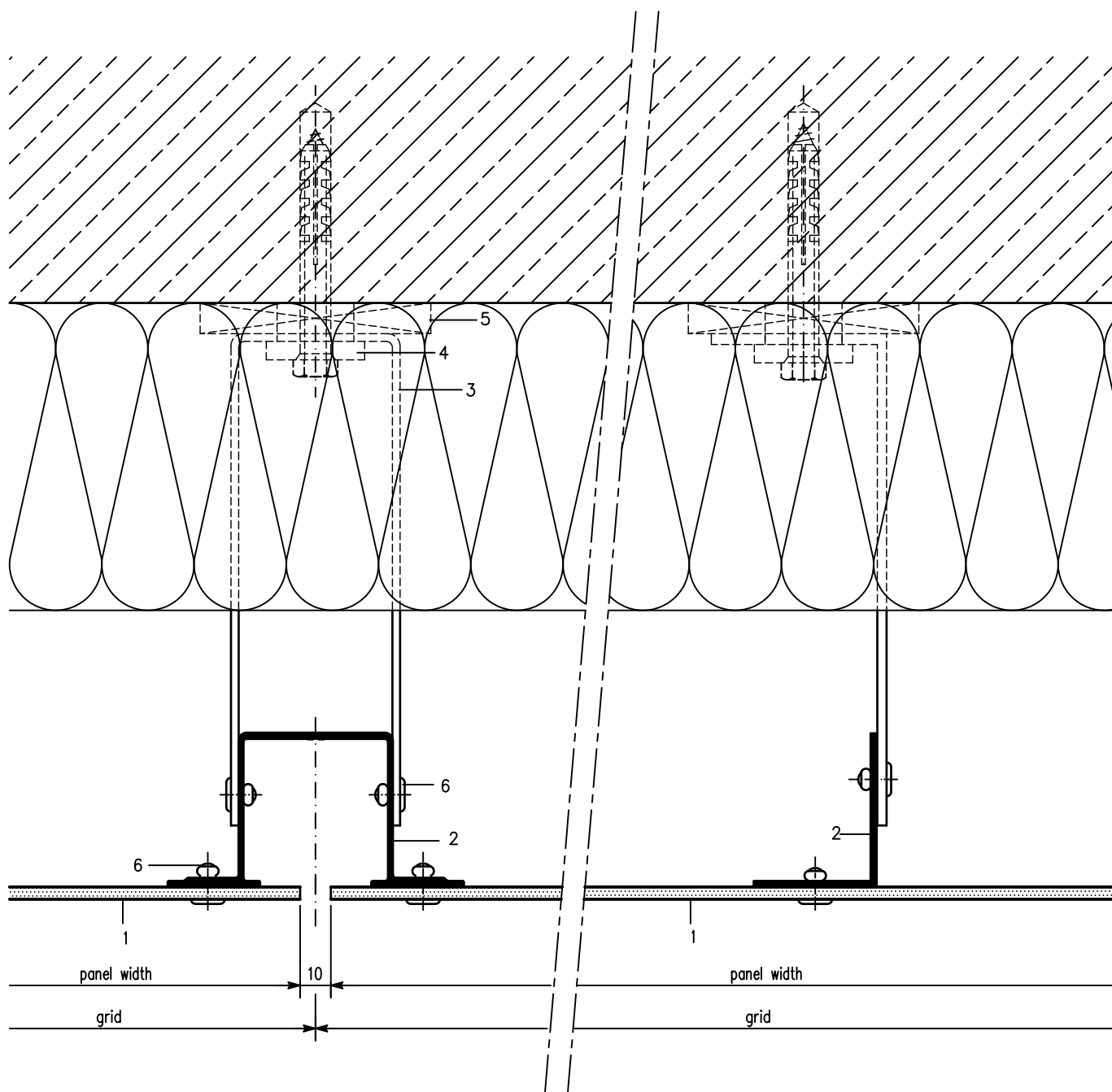


Vertical Panel Layout	3.2 Cross Joint/Elevation	
		Section
	3.10 Vertical joint	1—1
	3.20 Horizontal joint	2—2
	3.30 Window head	3—3
	3.40 Window sill	4—4
	3.50 Window jamb	5—5
	3.60 Parapet return	6—6
	3.70 Lower cladding end	7—7
	3.80 Corner segment/Inner corner	8—8
	3.90 Corner segment/Outer corner	9—9

Fascia, riveted

Panel fixed to vertical Substructure

Vertical Joint / Middle Support (Section 1-1) Scale 1:2



- 1 ALUCOBOND
- 2 Extruded hat section 35 953 / L-section
- 3* Wall bracket
- 4 Extruded Al-liner

- 5* Plastic board (thermal separation)
- 6* Aluminium-blind rivet

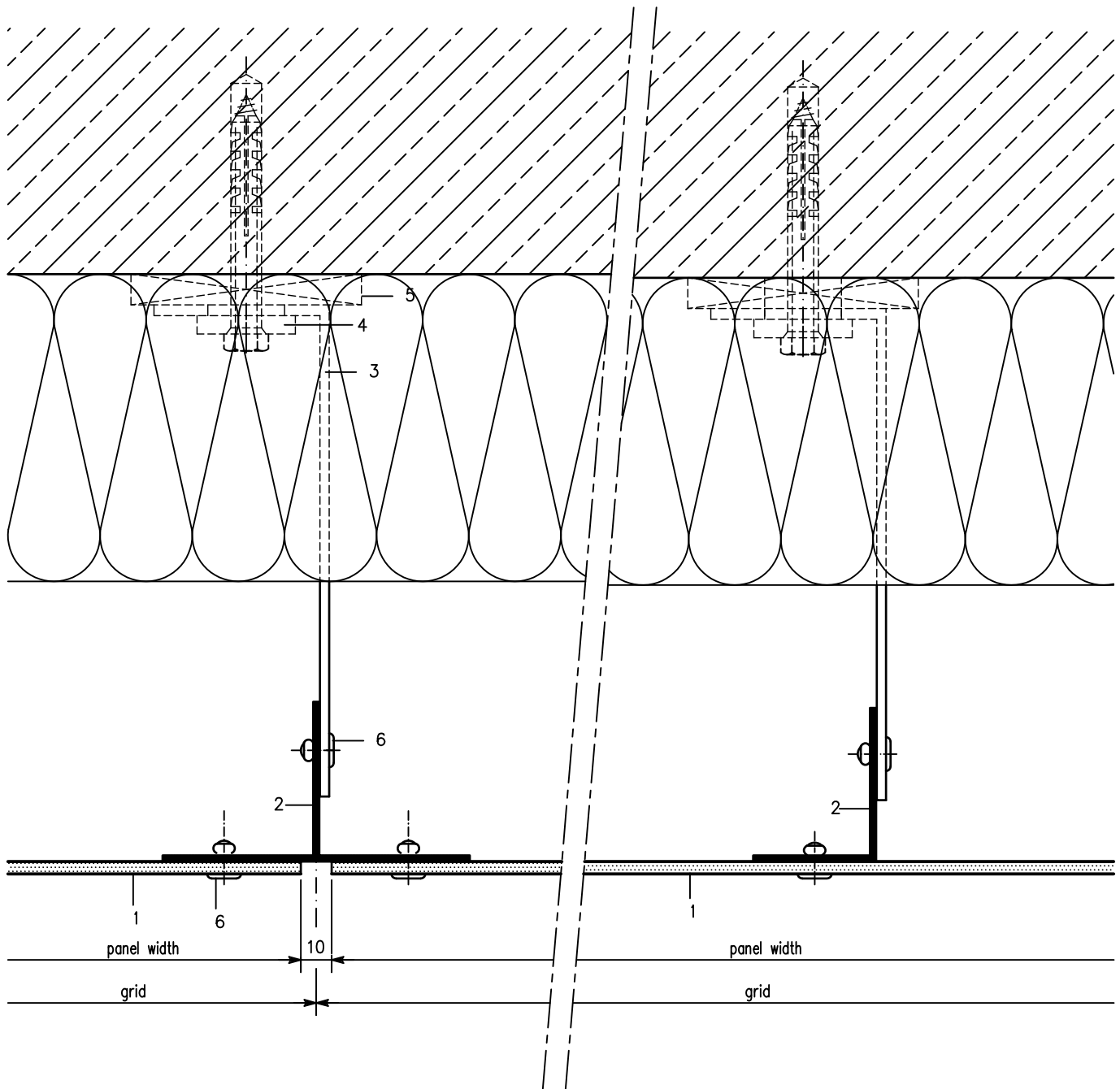
* Available from competent dealer

ALUCOBOND®

Fascia, riveted

Panel fixed to vertical Substructure

Vertical Joint / Middle Support (Section 1-1) Scale 1:2



- 1 ALUCOBOND
- 2 T-section / L-section
- 3* Wall bracket
- 4 Extruded Al-liner

- 5* Plastic board (thermal separation)
- 6* Aluminium-blind rivet

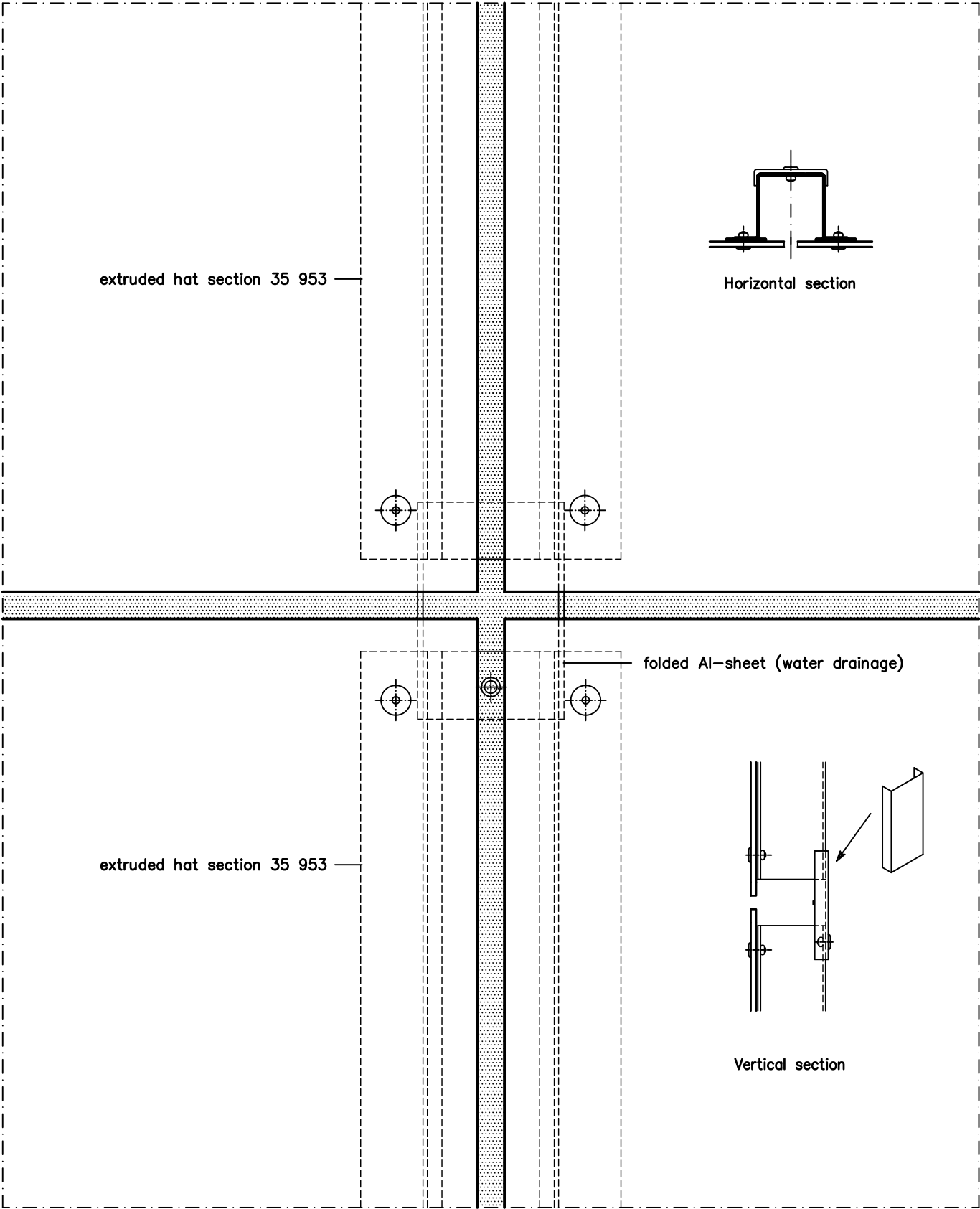
* Available from competent dealer

Fascia, riveted

Panel fixed to vertical Substructure

Cross Joint / Elevation Scale 1:2

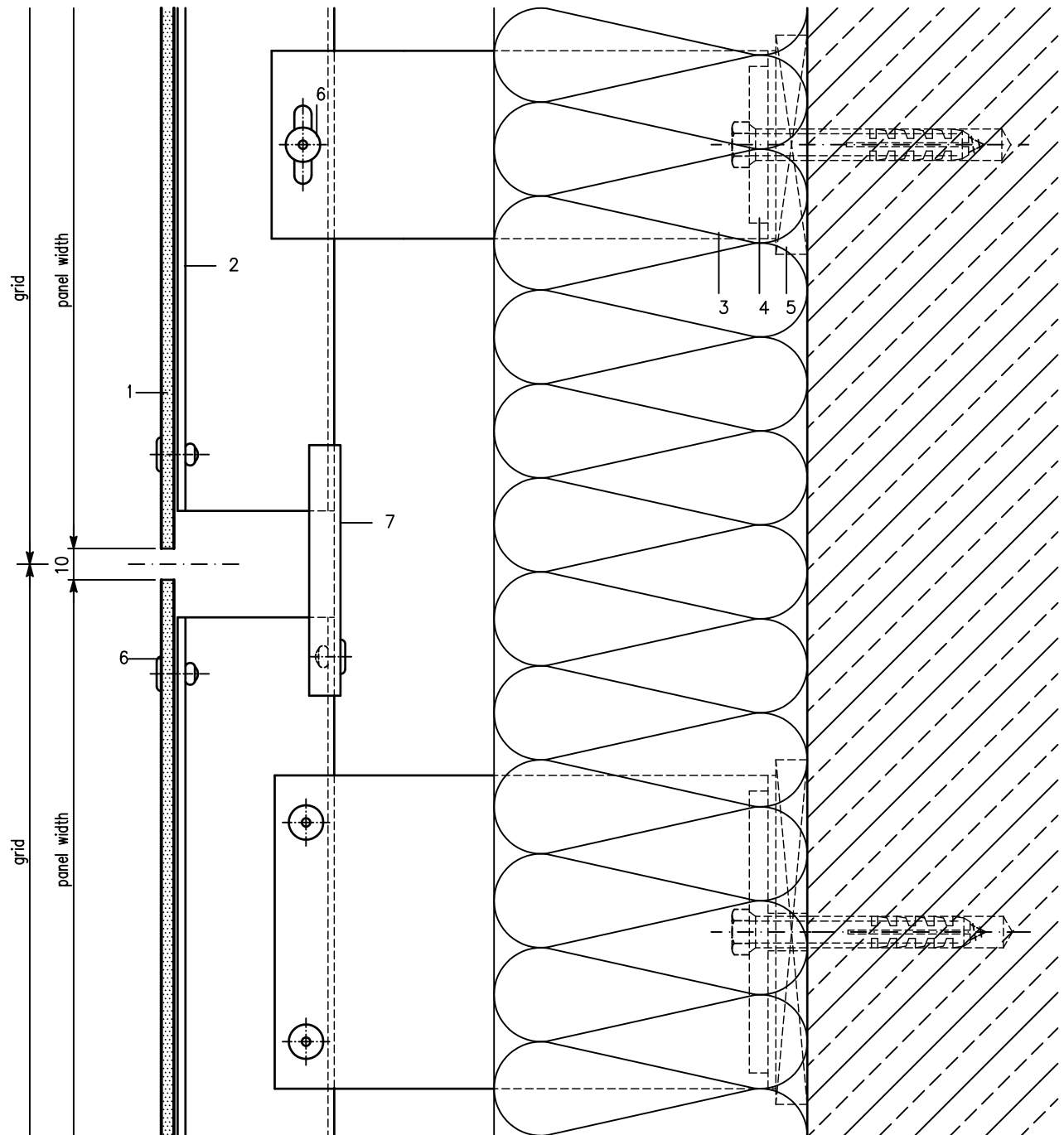
Product changes in the sense of a technical progress are reserved. All advice recommendation and information is given to the best of our knowledge but without any obligation on our part. 11.09



Fascia, riveted

Panel fixed to vertical Substructure

Horizontal Joint (Section 2-2) Scale 1:2



- 1 ALUCOBOND
- 2 Extruded hat section 35 953
- 3* Wall bracket
- 4 Extruded Al-liner
- 5* Plastic board (thermal separation)

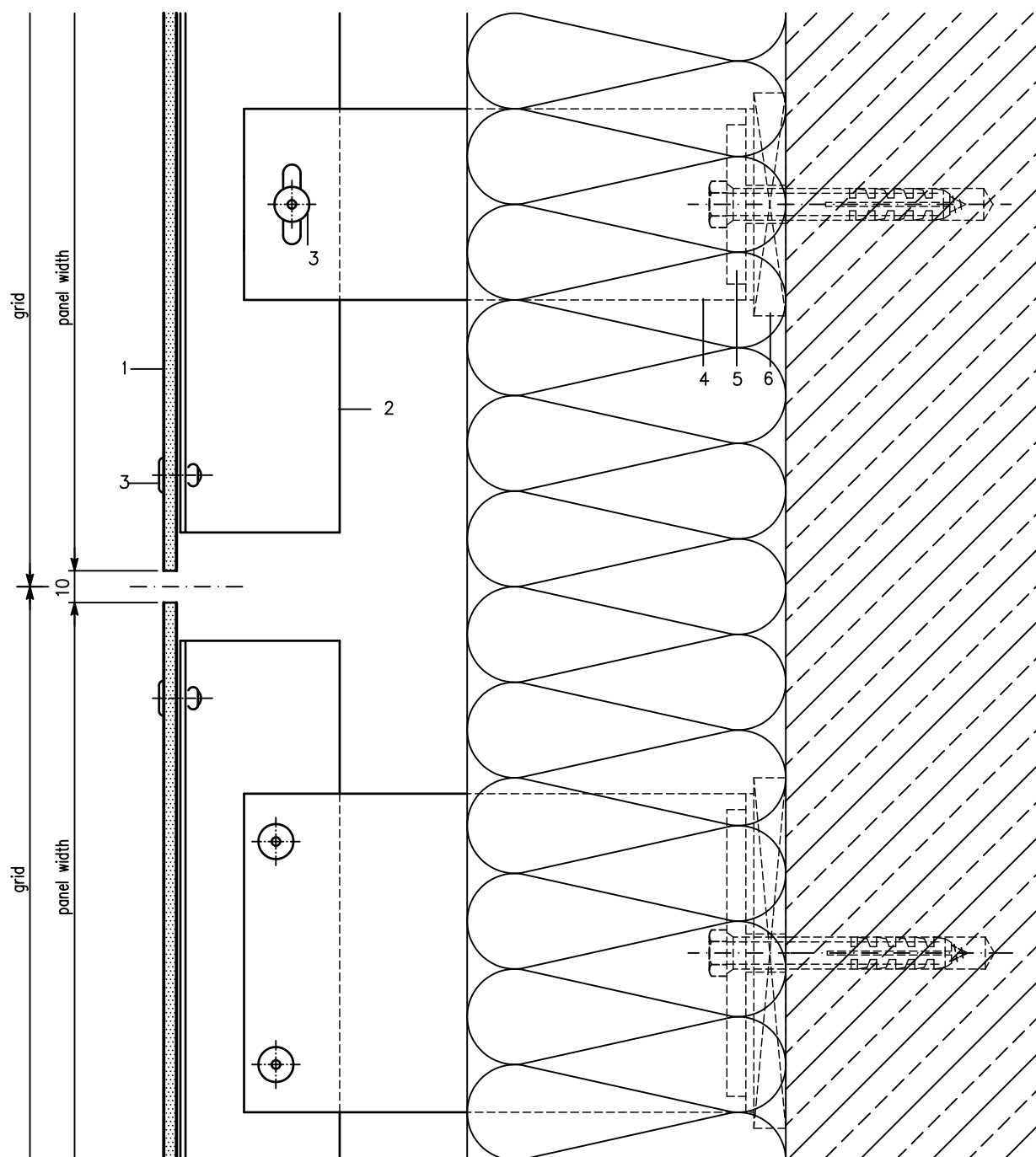
- 6* Aluminium-blind rivet
- 7 Folded Al-Sheet (water drainage)

* Available from competent dealer

Fascia, riveted

Panel fixed to vertical Substructure

Horizontal Joint (Section 2-2) Scale 1:2



- 1 ALUCOBOND
- 2 T-section
- 3* Aluminium-blind rivet
- 4 Wall bracket

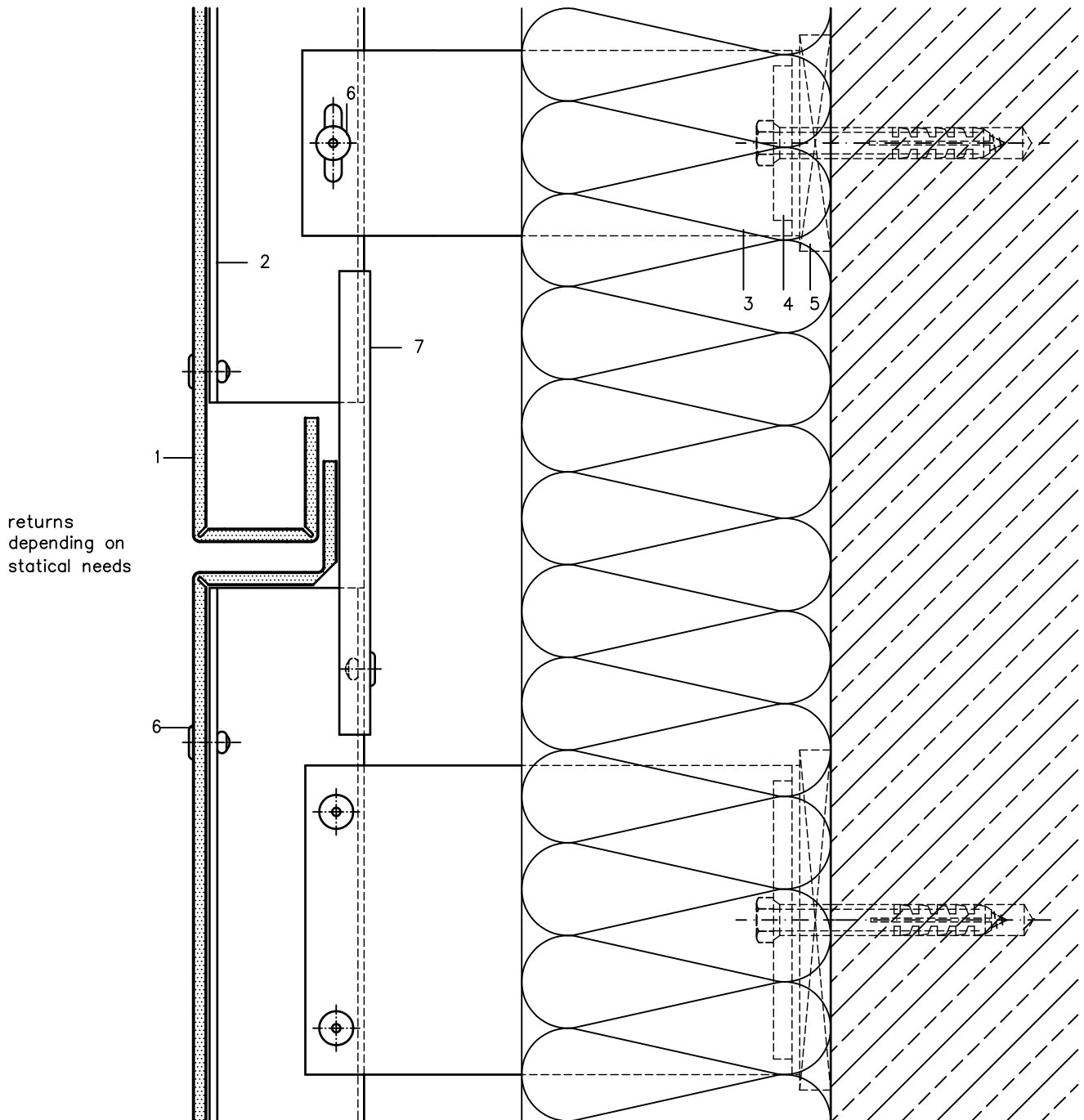
- 5* Extruded Al-liner
6* Plastic board (thermal separation)

* Available from competent dealer

Fascia, riveted – Vertical Panel Layout

Panel fixed to vertical Substructure – optional with horizontal Foldings

Horizontal Joint (Section 2–2) Scale 1:2



- 1 ALUCOBOND
- 2 Extruded hat section 35 953
- 3* Wall bracket
- 4 Extruded Al-liner
- 5* Plastic board (thermal separation)

- 6* Aluminium-blind rivet
- 7 Folded Al-Sheet (water drainage)

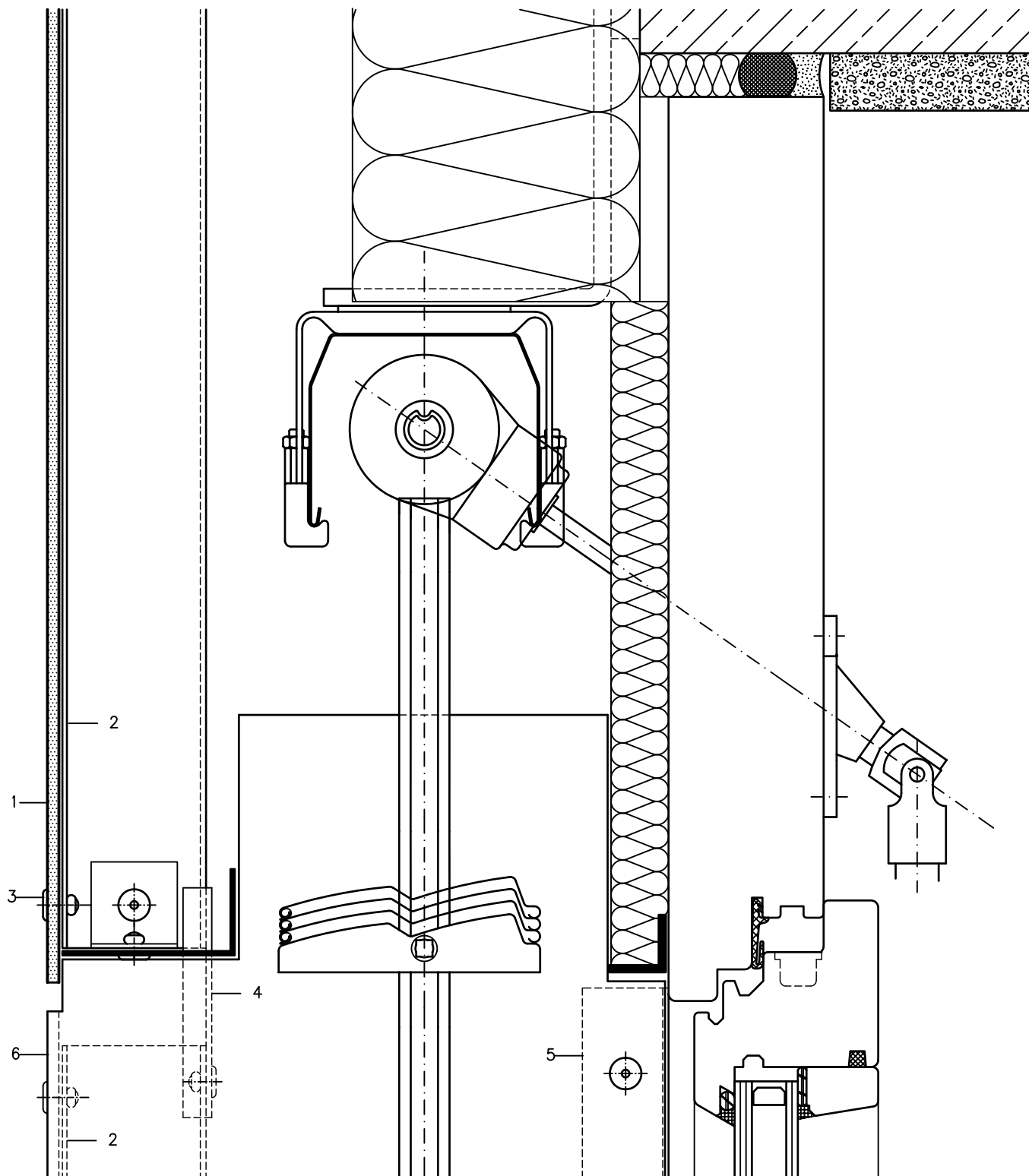
* Available from competent dealer

ALUCOBOND®

Fascia, riveted

Panel fixed to vertical Substructure

Window Head (Section 3-3, Area of Reveal) Scale 1:2



- 1 ALUCOBOND
- 2 Extruded hat section 35 953
- 3* Aluminium-blind rivet

- 4 Folded Al-sheet (water drainage)
- 5 Window connecting angle
- 6 Reveal (corner piece, folded)

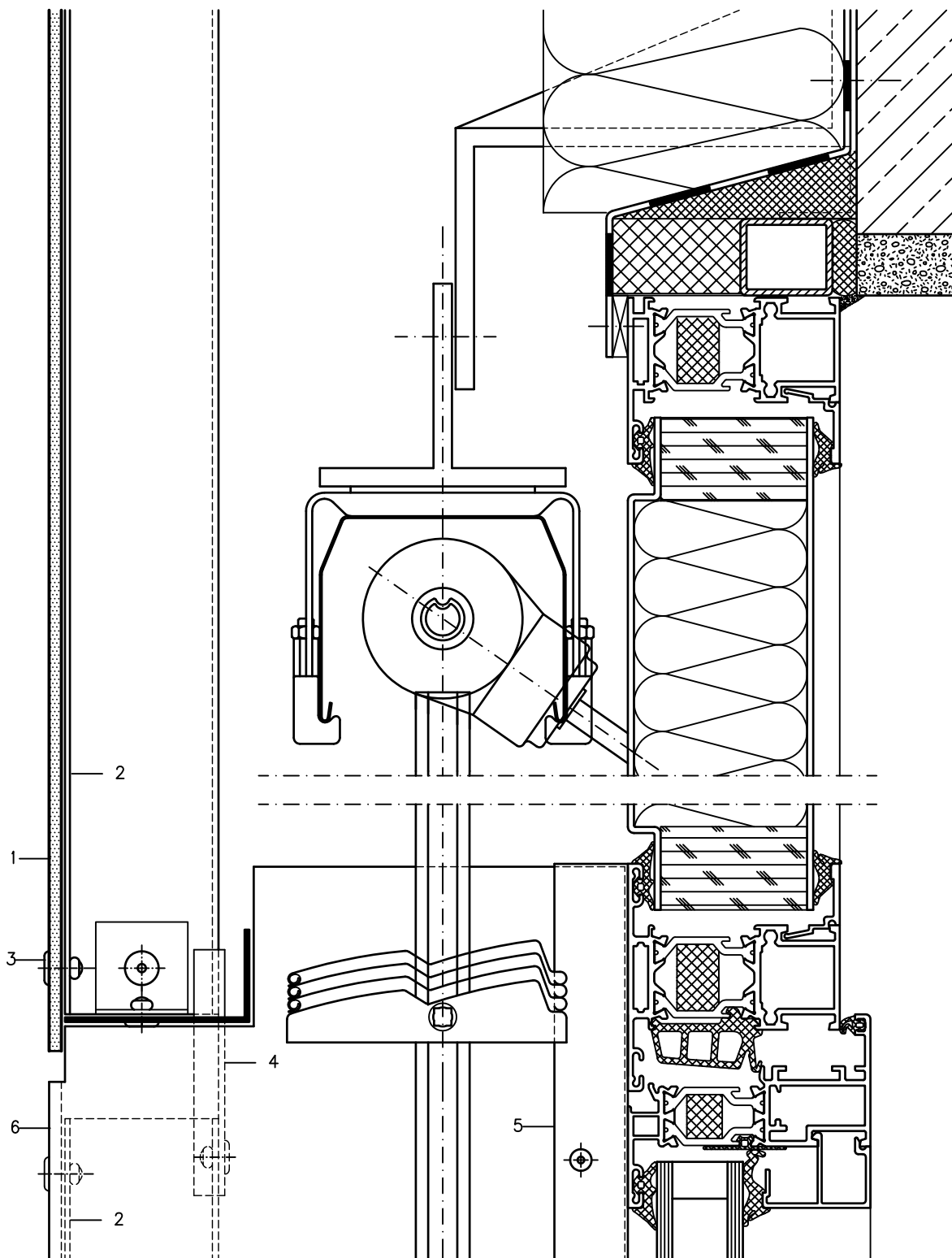
* Available from competent dealer

ALUCOBOND®

Fascia, riveted

Panel fixed to vertical Substructure

Window Head (Section 3-3, Area of Reveal) Scale 1:2



- 1 ALUCOBOND
- 2 Extruded hat section 35 953
- 3* Aluminium-blind rivet

- 4 Folded Al-sheet (water drainage)
- 5 Extruded window connecting section 38 464
- 6 Reveal (corner piece, folded)

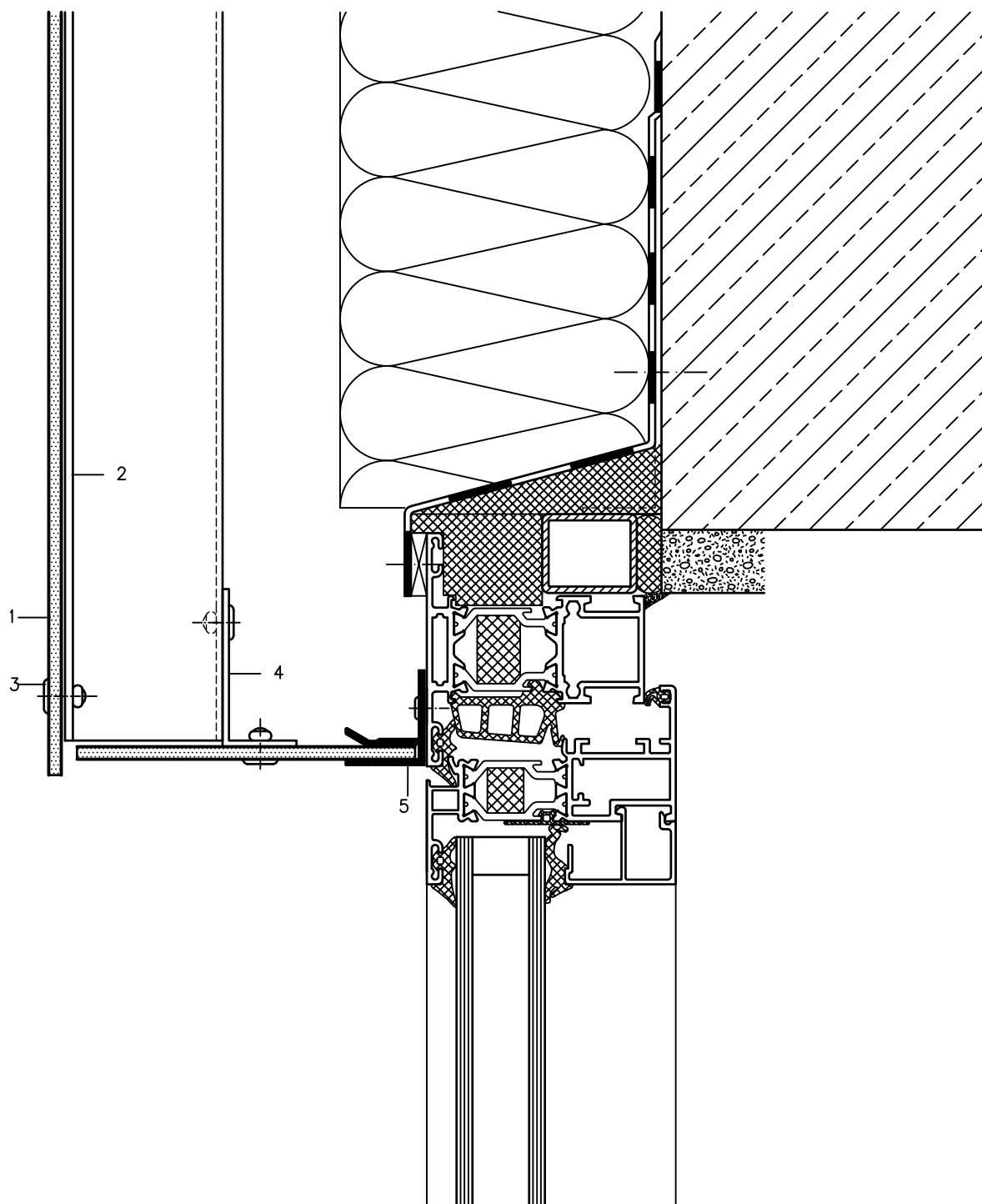
* Available from competent dealer

ALUCOBOND®

Fascia, riveted

Panel fixed to vertical Substructure

Window Head (Section 3-3, Area of Reveal) Scale 1:2



- 1 ALUCOBOND
- 2 Extruded hat section 35 953
- 3* Aluminium-blind rivet

- 4 L-section (short piece)
- 5 Window connecting section 38464

* Available from competent dealer

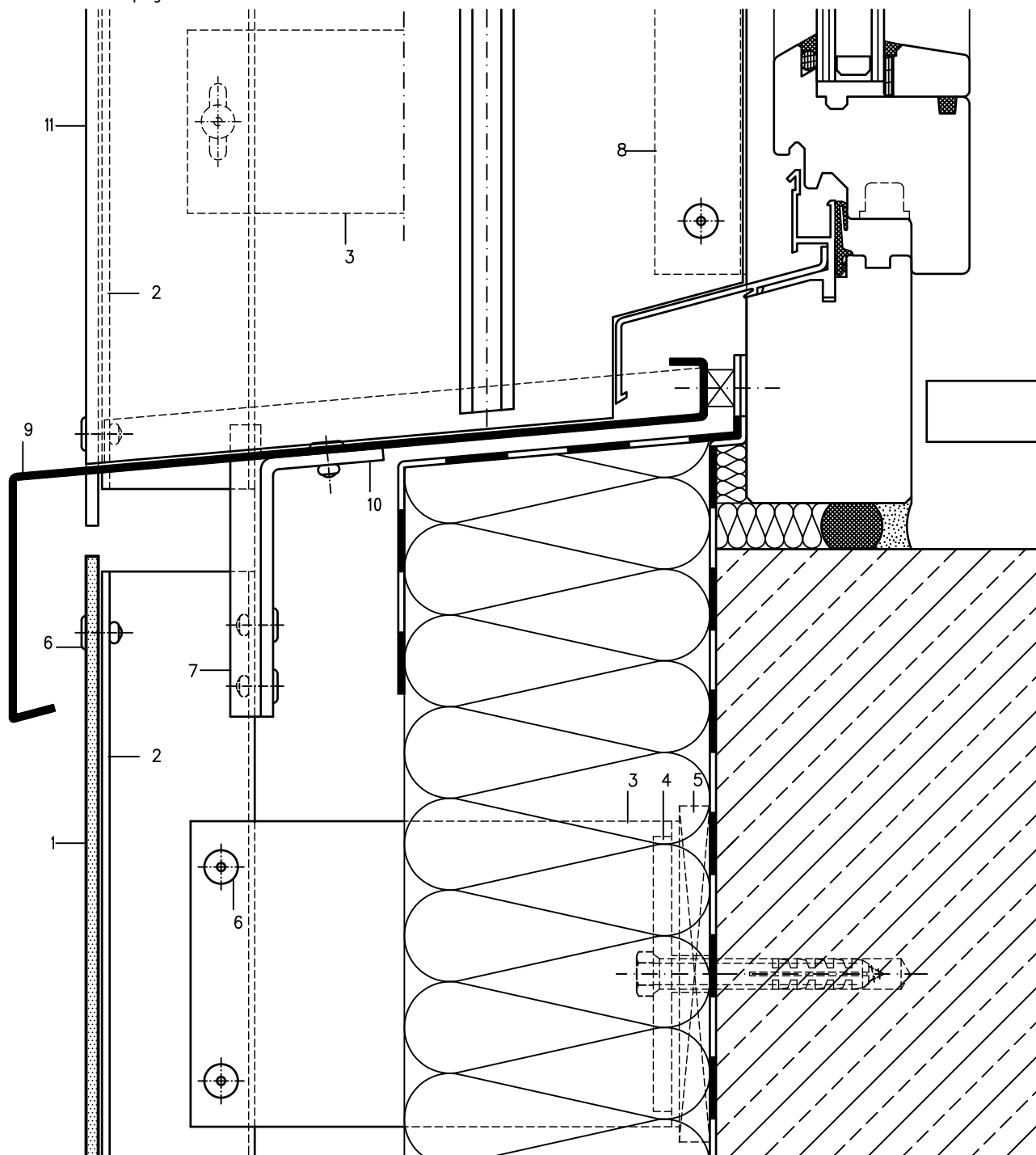
ALUCOBOND®

Fascia, riveted

Panel fixed to vertical Substructure

Window Sill (Section 4-4, Area of Reveal) Scale 1:2

Horizontal section see page 3.51



- 1 ALUCOBOND
- 2 Extruded hat section 35 953
- 3* Wall bracket
- 4 Extruded Al-liner
- 5* Plastic board (thermal separation)

- 6* Aluminium-blind rivet
- 7 Folded Al-sheet (water drainage)
- 8 Window connecting angle
- 9 Window sill-shaped aluminium sheet
- 10 Fixing angle (support window sill)
- 11 Reveal (corner piece, folded)

* Available from competent dealer

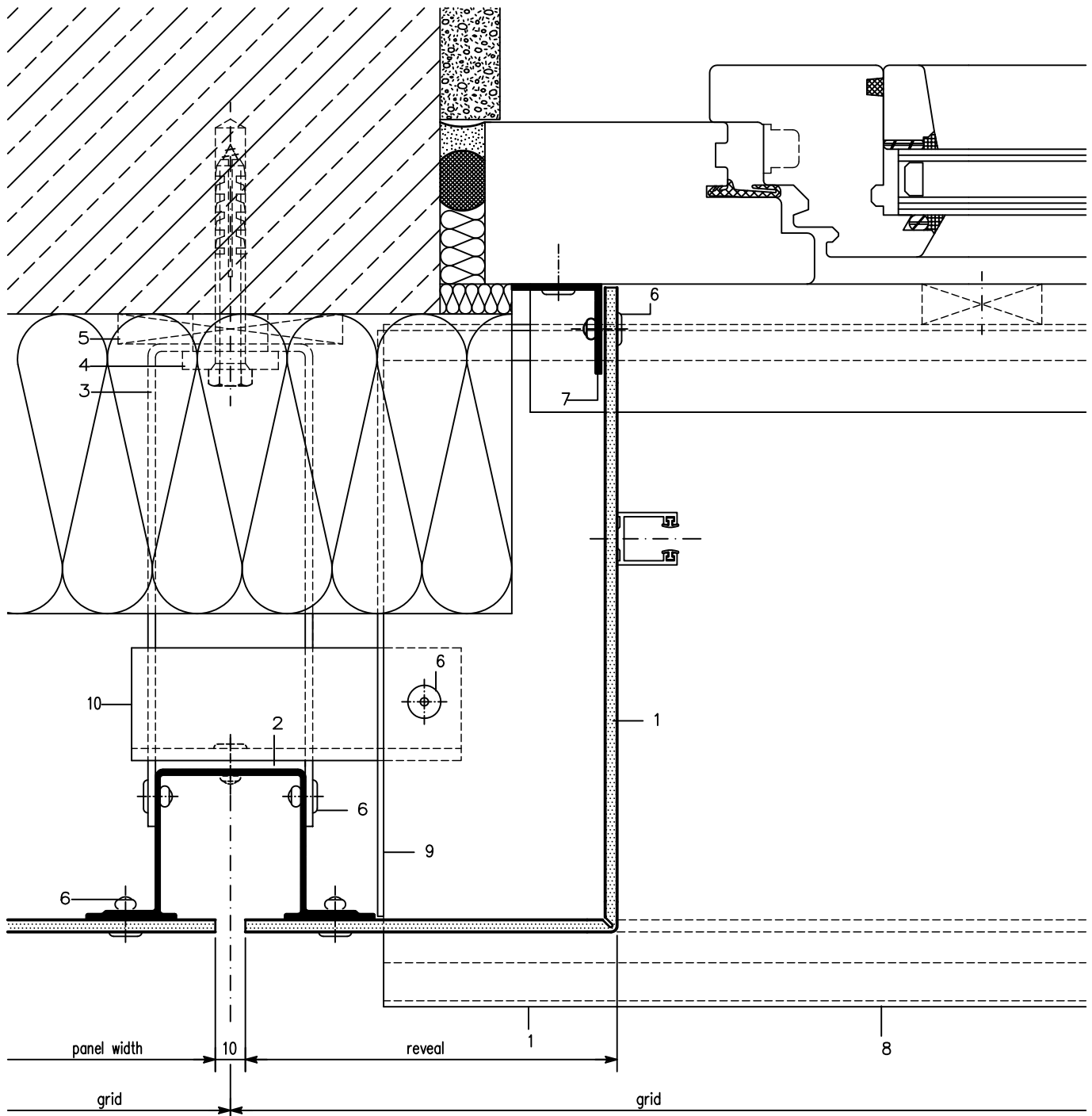
Fascia, riveted

Panel fixed to vertical Substructure

Window Jamb, folded Reveal (Section 5–5) Scale 1:2

Vertical section see page 3.41

Product changes in the sense of a technical progress are reserved. All advice recommendation and information is given to the best of our knowledge but without any obligation on our part. 11.09



- 1 ALUCOBOND
- 2 Extruded hat section 35 953
- 3* Wall bracket
- 4 Extruded Al-liner
- 5* Plastic board (thermal separation)

- 6* Aluminium-blind rivet
- 7 Window connecting angle
- 8 Window sill-shaped aluminium sheet
- 9 Side folding (window sill)
- 10 Support for window sill

* Available from competent dealer

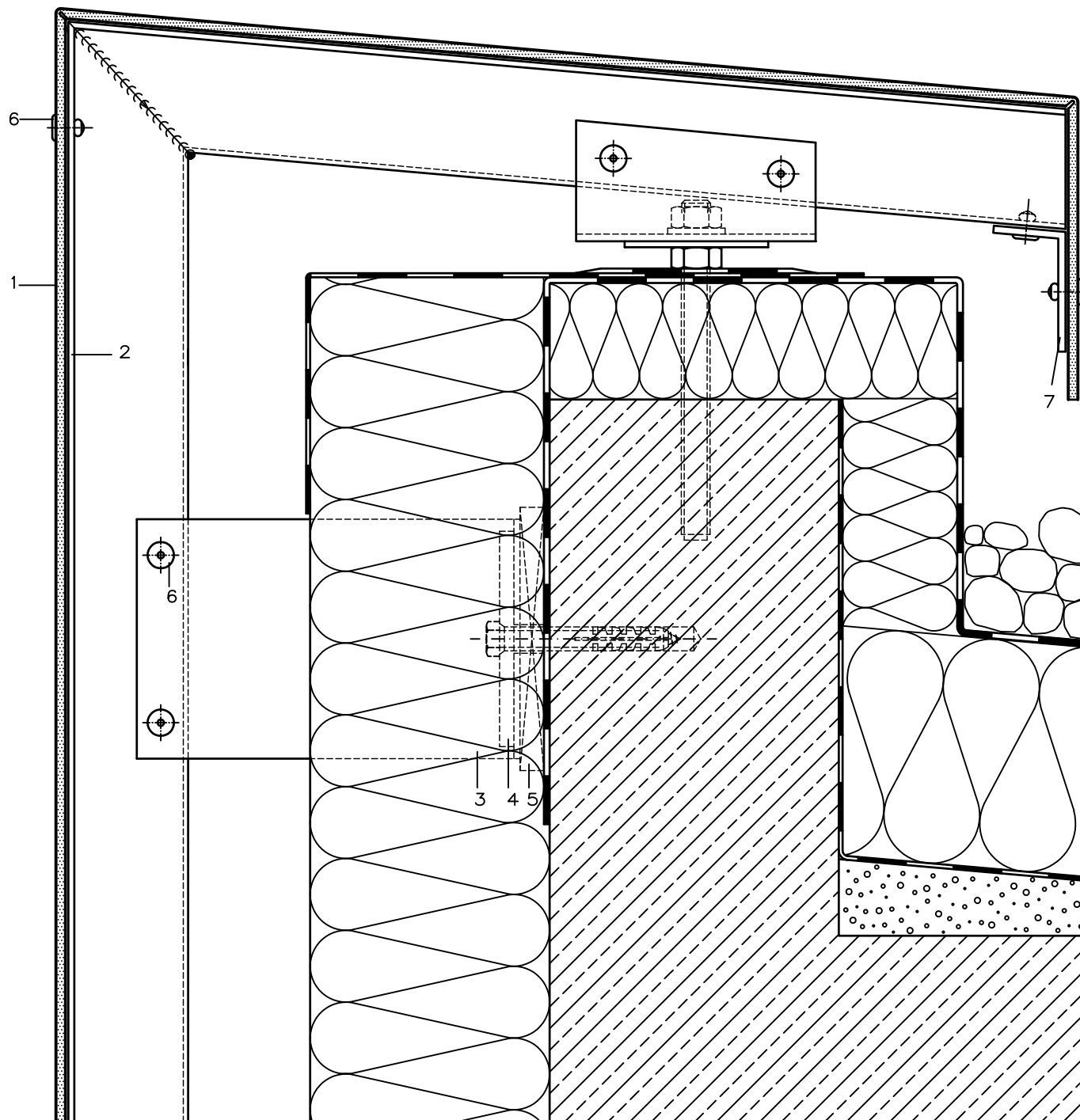
ALUCOBOND®

Fascia, riveted

Panel fixed to vertical Substructure

Parapet Return (Section 6-6) Scale 1:2,5

Product changes in the sense of a technical progress are reserved. All advice recommendation and information is given to the best of our knowledge but without any obligation on our part. 11.09

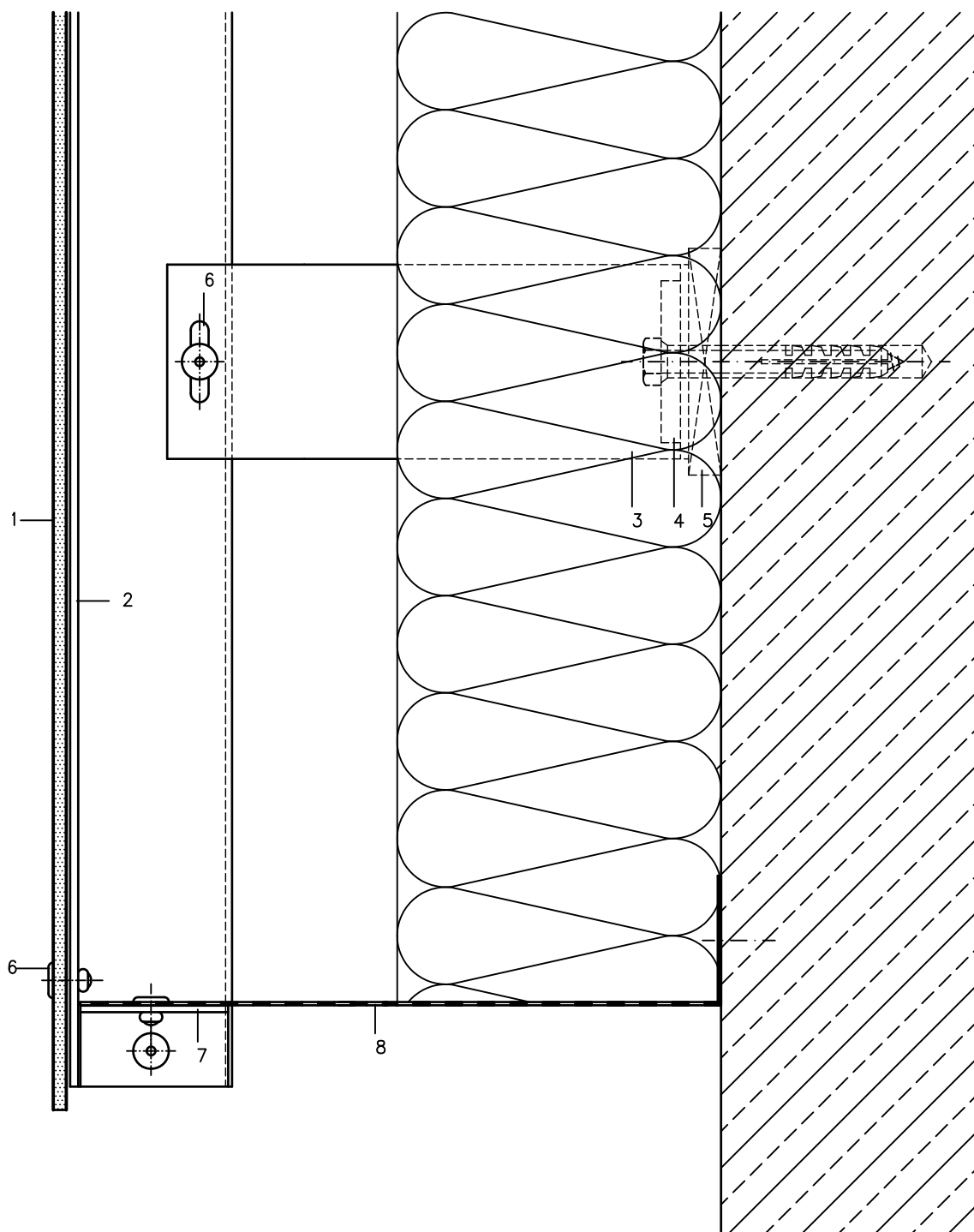


- 1 ALUCOBOND
- 2 Extruded hat section 35 953
- 3* Wall bracket
- 4 Extruded Al-liner
- 5* Plastic board (thermal separation)

- 6* Aluminium-blind rivet
- 7 Fixing angle

* Available from competent dealer

Lower Cladding End (Section 7-7) Scale 1:2



- 6* Aluminium-blind rivet
7 Fixing angle 25/25/2 (length: 48 mm)
8* Ventilating section/perforated sheet

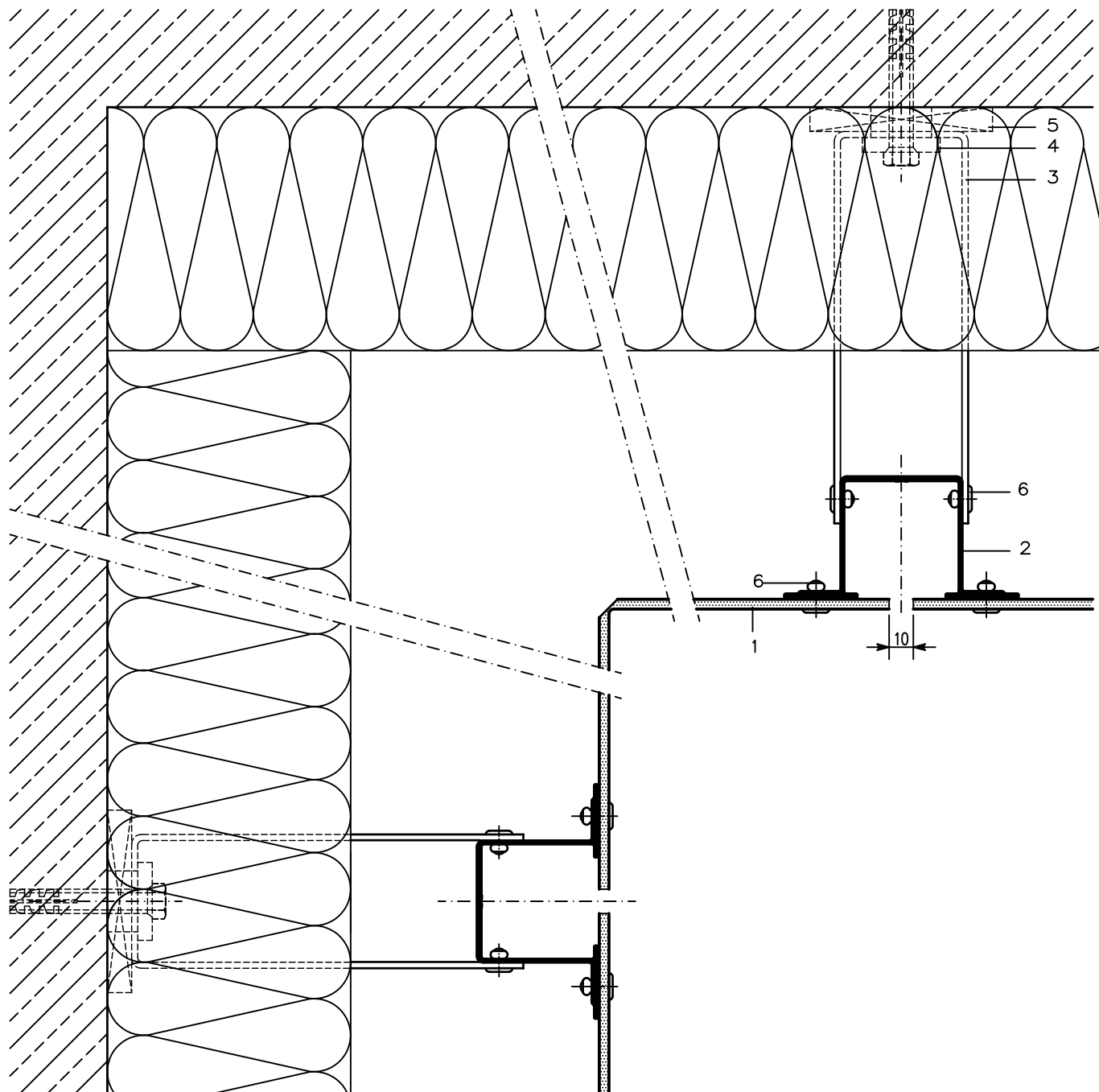
Part 6

ALUCOBOND®

Fascia, riveted

Panel fixed to vertical Substructure

Corner Segment / Inner Corner (Section 8–8) Scale 1:2,5



- 1 ALUCOBOND
- 2 Extruded hat section 35 953
- 3* Wall bracket
- 4 Extruded Al-liner
- 5* Plastic board (thermal separation)

6* Aluminium-blind rivet

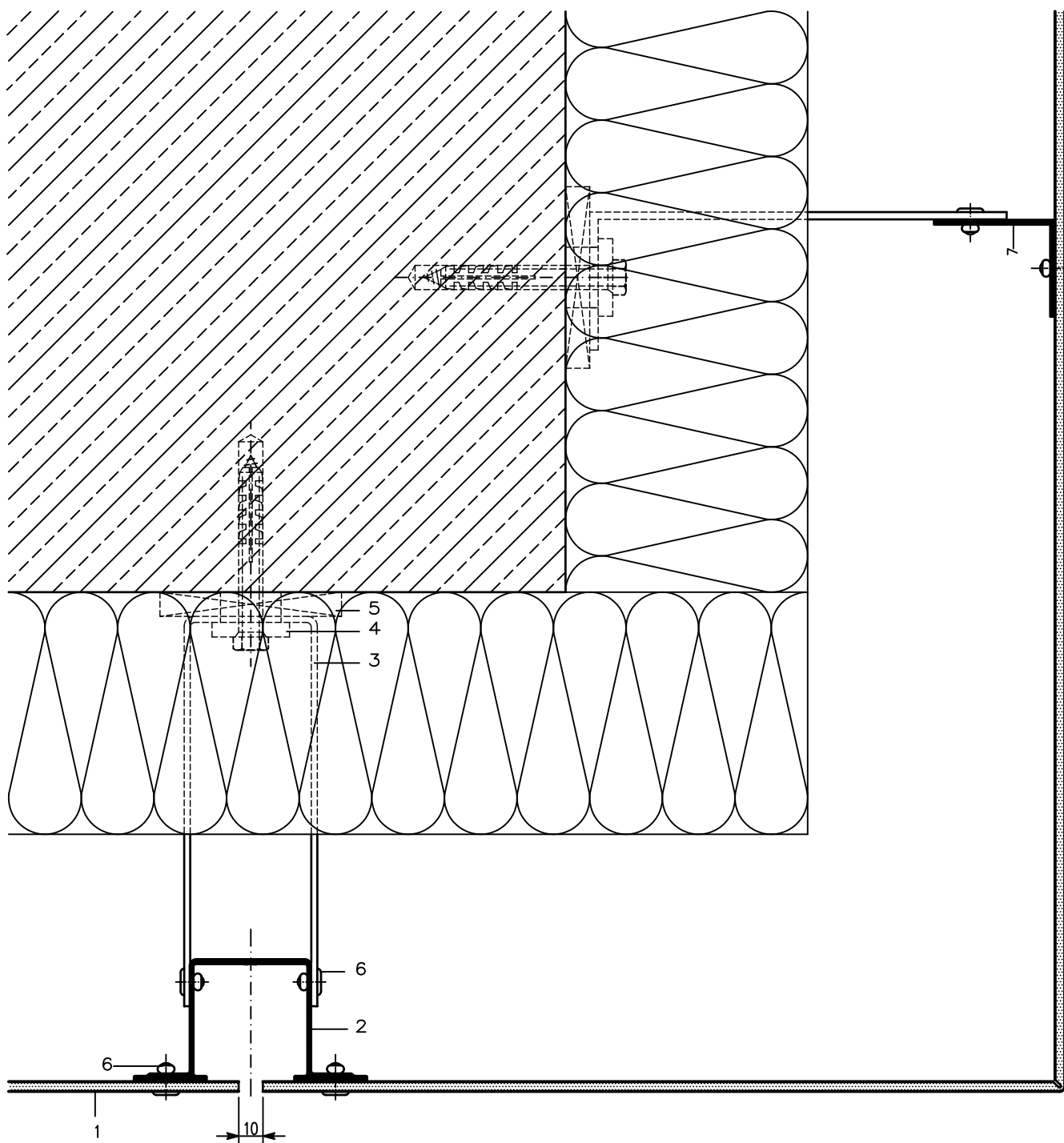
* Available from competent dealer

ALUCOBOND®

Fascia, riveted

Panel fixed to vertical Substructure

Corner Segment / Inner Corner (Section 8-8) Scale 1:2,5



1 ALUCOBOND

2 Extruded hat section 35 953

3* Wall bracket

4 Extruded Al-liner

5* Plastic board (thermal separation)

6* Aluminium-blind rivet

7 L-section

* Available from competent dealer